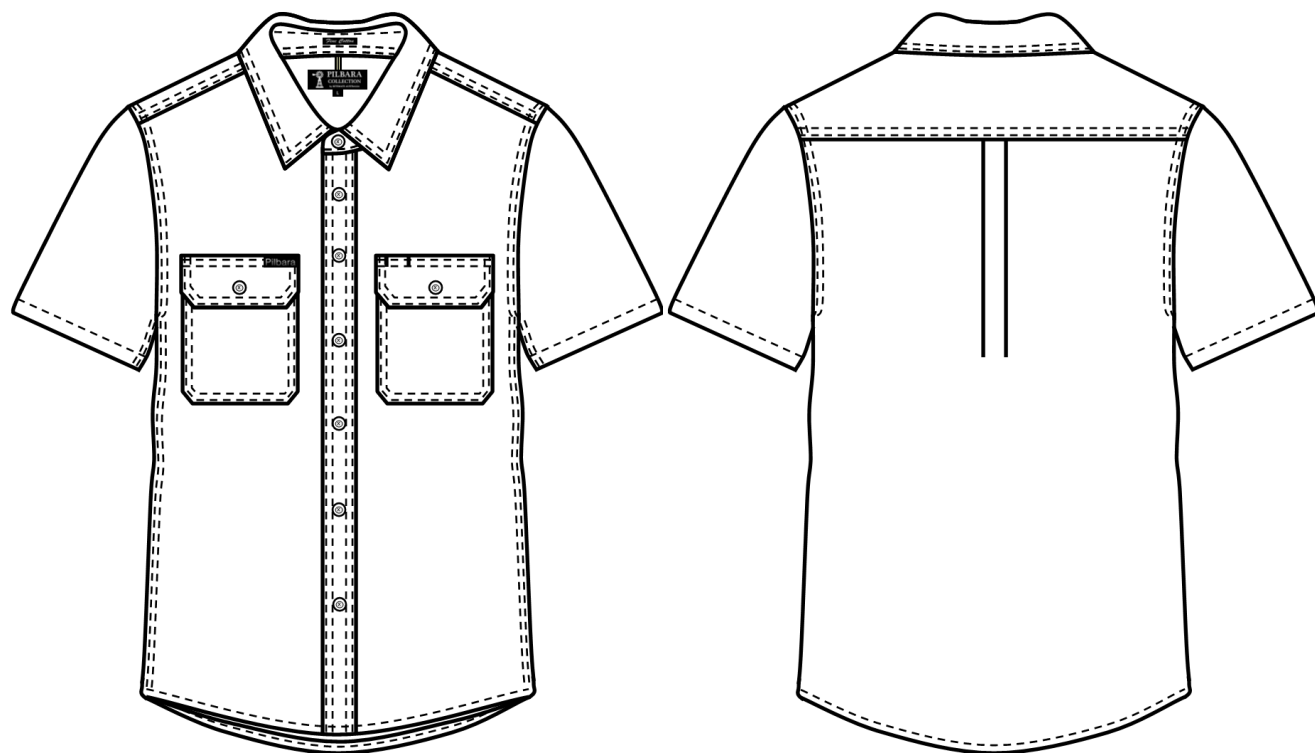


# Pilbara Collection Shirts

**COMMERCIAL IN CONFIDENCE**

## RMPC011S Men's Front Flap Dual Pocket, Classic Fit, Short Sleeve Shirt, Y/D Stripe



**Features**

- Premium Quality Mercerized, Double pre-shrunk, 100% Cotton Shirt
- Timeless Y/D Check Design
- Classic Fit Styling
- Front Flap Dual Pocket
- Clear White Button

**Fabric:**

Crafted from 100% High Count, Easy Care, Fine Cotton, 130gsm, Yarn Dyed Check

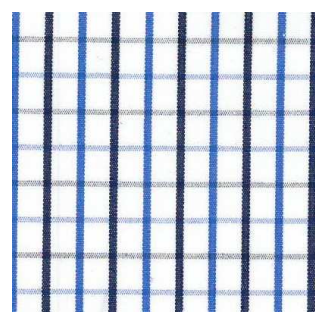
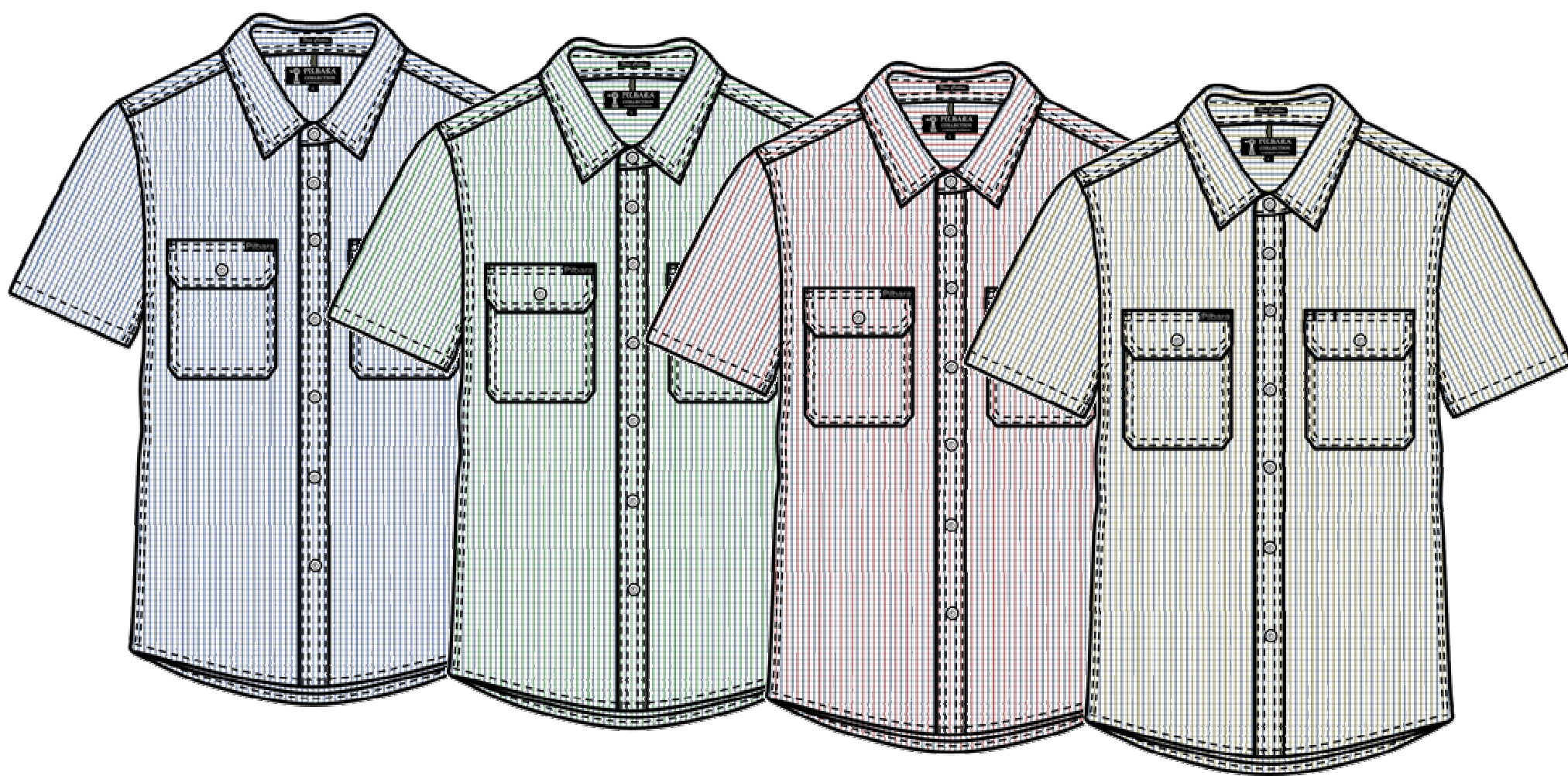
**Colour:**

Blue-Navy-White check    Emerald-Navy-White check  
 Red-Navy-White check    Safari-Navy-White check

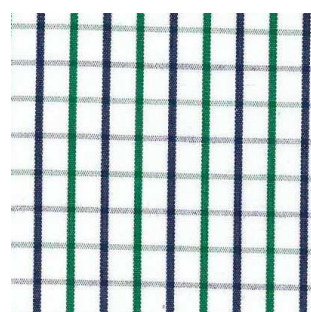
**Size Range**    XS – 5XL

**Fabric Quality**

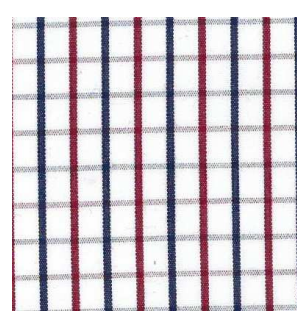
|                            |                 |            |
|----------------------------|-----------------|------------|
| Dimension Stability        |                 | +/-3%      |
| Colour Fastness to Washing | Colour Change   | 4          |
|                            | Colour Staining | 4-5        |
| Colour Fastness to Rubbing | Dry             | 3-4        |
|                            | Wet             | 2-3        |
| Tearing Strength           | Warp            | >=10 min N |
|                            | Weft            | >=7 min N  |



Blue-Navy-White check



Emerald-Navy-White check



Red-Navy-White check



Safari-Navy-White check

**Measurement Table**

| Major Points       | XS                        | S  | M  | L  | XL | 2XL | 3XL | 4XL | 5XL |  |  |  |
|--------------------|---------------------------|----|----|----|----|-----|-----|-----|-----|--|--|--|
| 1/2 Chest          | 49                        | 52 | 55 | 59 | 63 | 67  | 71  | 75  | 78  |  |  |  |
| Centre Back Length | 80                        | 81 | 82 | 83 | 85 | 87  | 89  | 91  | 93  |  |  |  |
| Sleeve Length      | 24                        | 24 | 25 | 26 | 28 | 30  | 32  | 33  | 34  |  |  |  |
| Shoulder Width     | 42                        | 44 | 46 | 49 | 52 | 55  | 58  | 61  | 63  |  |  |  |
| Pocket Dimension   | Width 13.5 x Depth 16.5cm |    |    |    |    |     |     |     |     |  |  |  |