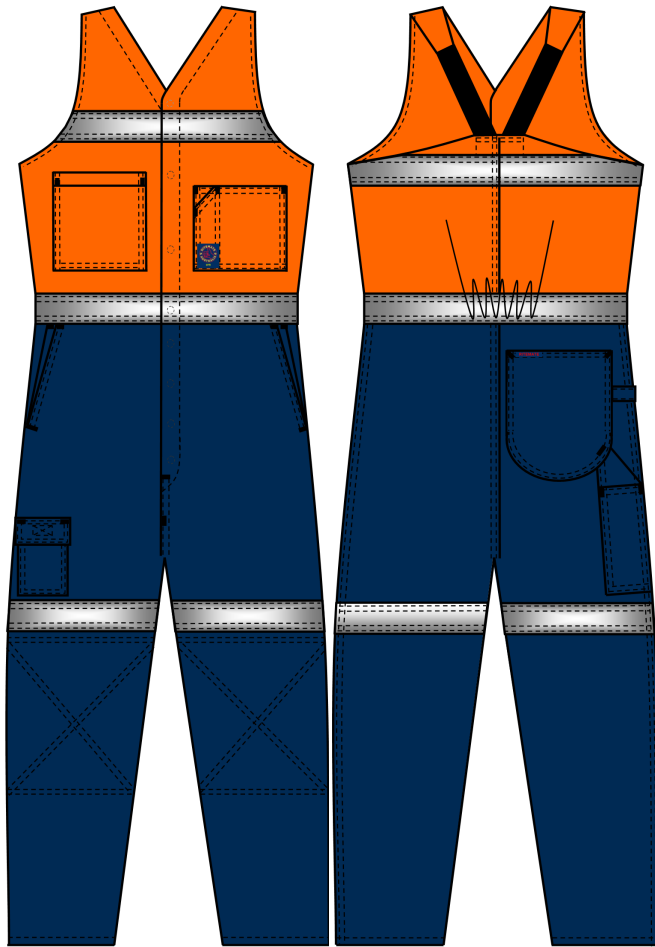


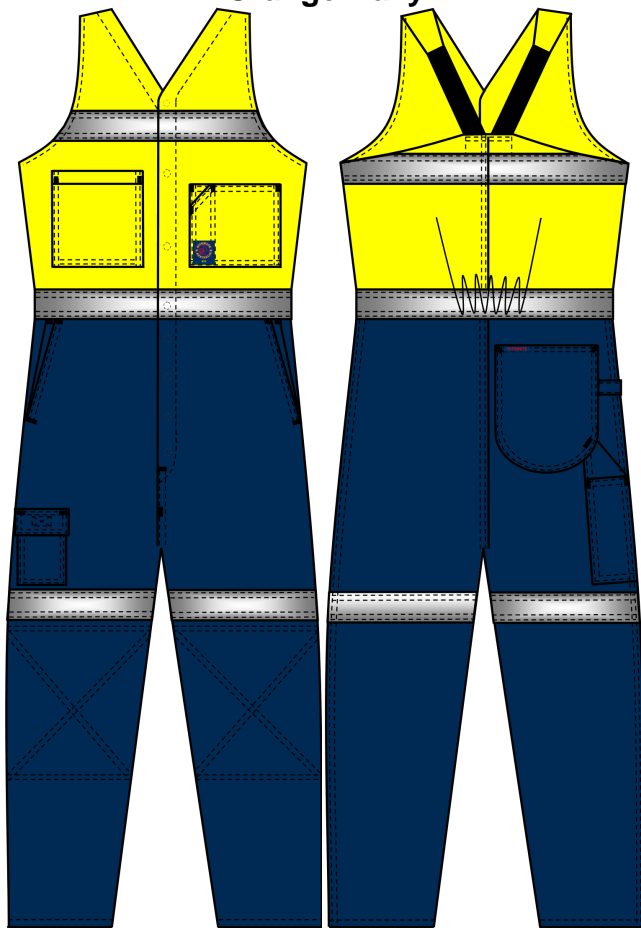
Ritemate Workwear Coverall

COMMERCIAL IN CONFIDENCE

RM909AR 2 Tone Action Back Overall with Reflective Tape



Orange-Navy



Yellow-Navy



Reflective Tape

Features

- Superior Garment Assembly, Twin Needle Stitching and Bar- tacks for Extra Strength
- Heavy Duty Elastic Band Cross Shoulder
- Quality Rivet Press Studs
- Quality YKK Zippers
- AS/NZS 4602.1:2011 and AS/NZS 1906:4:2023 for High Visibility Day/Night Wear

Fabric

Cotton Twill, 311gsm

Colour

Orange-Navy Yellow-Navy

Tape Configuration

Reflective Tape 50mm

Two Hoops on Body

One Hoop on Either Side of Leg Panel Knee Area

Hi Visibility Application

Day time

Night time

Size Range

77R - 112R

87S - 127S

Fabric Quality

Dimension Stability		+/-3%
Colour Fastness to Washing	Colour Change	4
	Colour Staining	4-5
Colour Fastness to Rubbing	Dry	3-4
	Wet	2-3
Colour Fastness to Light		4-5
Tearing Strength	Warp	>=25 min N
	Weft	>=21 min N

Measurement Table

Major Points	Regular Fit								
	77R	82R	87R	92R	97R	102R	107R	112R	
1/2 Chest	49	52	54	58	60	63	66	68	
1/2 Waist Extended	47	50	52	55	58	60	62	65	
1/2 Hip	52	55	57	60	62	65	67	70	
CB Neck to Crotch	64	67	70	73	76	79	82	85	
Inseam	71	74	76	78	80	82	84	85	

Major Points	Stout Fit								
	87S	92S	97S	102S	107S	112S	117S	122S	127S
1/2 Chest	51	55	57	59	62	64	66.5	69	71.5
1/2 Waist Extended	51	54	57	58	61	63.5	66	68.5	71
1/2 Hip	56	58	61	63	65	67.5	70	72.5	74.5
CB Neck to Crotch	64	67	70	73	76	78	80	81	83
Inseam	67	70	72	75	77	78	78	78	78