



WOMENS MELBOURNE COMFORT JACKET RJK265L

A timeless piece with lightweight filling that is perfect for the cooler months on the road or in the office. Soft brushed fabric provides a premium look and soft hand feel. The Melbourne Jacket is ideal for those after an alternative to Bonded Polar Fleece Jackets.

DETAILS



MELBOURNE

Main 45% Cotton 44% Polyester 11% Nylon, with water repellent finish suitable for light showers. *Note: DWR treatment will last up to 25 machine washes.*

Lining 100% Polyester

Filling 100% Polyester, light-weight 60gsm

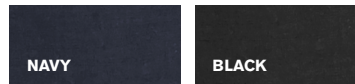
The perfect throw on and go jacket, warm enough for cool climates, with a breathable cotton blend shell. Soft peach finish.

FABRIC CARE INSTRUCTIONS

- Colour may transfer when new, wash jacket before wearing. Machine wash in cold water, wash dark colours separately. Do not bleach. Steam iron if required. Tumble dry low. Dry cleanable.



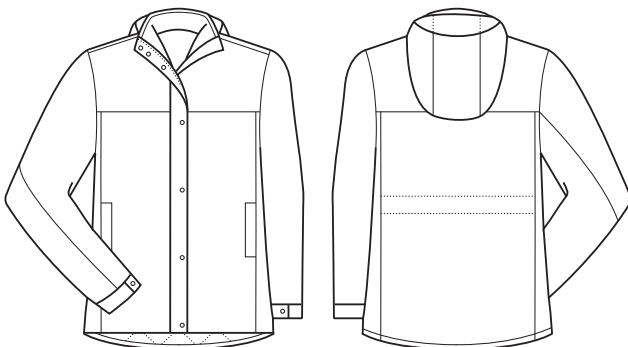
COLOURS



GARMENT MEASUREMENTS

SIZE	XS	S	M	L	XL	2XL
½ CHEST (CM)	48	51.5	55	58.5	62	65.5
½ WAIST (CM)	47	50.5	54	57.5	61	64.5
½ HEM (CM)	51	54.5	58	61.5	65	68.5
TOTAL LENGTH FROM HSP (CM)	70	71.5	73	74.5	76	77.5
CENTRE BACK LENGTH (CM)	76	77.5	79	80.5	82	83.5

SPEC DRAWING



STYLE DETAILS

- Detachable hood
- Storm cover over front zip
- Two side pockets and internal pocket
- Adjustable cuffs
- Embroidery zip and metal snaps
- Longline curved hem designed to sit under hips for extra coverage
- Adjustable waist cord for added shape through waist

STYLE TIPS

- Can be worn with business lowers, chinos or jeans.
- Marketed as a dressy option to the traditional bonded polar fleece jackets
- Wear without hood for a more corporate look
- Light enough that it can be worn outside and inside

RECOMMENDED INDUSTRY

- Suitable for wearers who do not require a 100% waterproof jacket, such as office workers and most sales representatives.